



Government of India
Ministry of Earth Sciences
India Meteorological Department



Press Release

Date: 11th July, 2025

Time of Issue: 1320 hours IST

Subject: Heavy to very heavy rainfall spell likely to continue over central & adjoining northwest India during next 4-5 days.

Realised weather during past 24 hours till 0830 hours IST of today, the 11th July, 2025:

- ❖ **Heavy to very heavy rainfall (7-20 cm)** has been recorded at isolated places over East Uttar Pradesh, East Madhya Pradesh, Punjab; **Heavy rainfall (7-11 cm)** at isolated places over Himachal Pradesh, south Haryana, West Uttar Pradesh, East Rajasthan, Chhattisgarh, West Madhya Pradesh, Kerala, Coastal Karnataka, Gangetic West Bengal, Bihar, Jharkhand and Assam.
- ❖ **Thunderstorm accompanied with Squally/Gusty winds with speed 40-60 kmph** over Tamil Nadu, Kerala, interior Karnataka, Coastal Andhra Pradesh & Yanam, Telangana, Rayalaseema, East Uttar Pradesh, Chhattisgarh, Punjab, Madhya Maharashtra, Himachal Pradesh.

For more details of realised weather, kindly refer [Annexure I](#),

i. Weather Systems, Forecast and Warnings (refer to Annexure II & III):

- ❖ The **Monsoon trough** runs to near its normal position at mean sea level.
- ❖ The Low-Pressure area over south Jharkhand & neighbourhood has become less marked. However, associated cyclonic circulation lay over north Chhattisgarh in lower & middle tropospheric levels.
- ❖ An **upper air cyclonic circulation** lies over Haryana & neighbourhood in lower tropospheric levels.
- ❖ A **trough** runs from southwest Uttar Pradesh to northwest Bay of Bengal in lower tropospheric levels.
- ❖ Another **trough** runs from northeast Arabian Sea to the cyclonic circulation over north Chhattisgarh in middle tropospheric levels.

Under the influence of these systems, the following weather is likely:

Northwest India:

- ✓ Isolated **heavy rainfall** likely over East Rajasthan, Uttarakhand, Himachal Pradesh during 11th-17th; Jammu-Kashmir during 14th-17th; West Uttar Pradesh during 11th-15th; south Haryana on 11th; East Uttar Pradesh on 12th & 15th; West Rajasthan during 12th-16th July with **very heavy rainfall over Uttar Pradesh on 11th; East Rajasthan during 11th-15th; Uttarakhand on 15th & 16th July.**
- ✓ Light/moderate rainfall at most/many places accompanied with thunderstorm, lightning likely over western Himalayan region and some/many places over the plains during next 7 days.

East & Central India:

- ✓ Isolated **heavy rainfall** very likely to continue over Madhya Pradesh during 11th-17th; Chhattisgarh during 11th-14th; Jharkhand during 11th-15th; Sub-Himalayan West Bengal & Sikkim during 13th-16th; Gangetic West Bengal on 14th; Odisha during 11th-16th; Bihar on 11th, 15th & 16th July **with very heavy rainfall over Madhya Pradesh during 11th-14th July.**
- ✓ Light/moderate rainfall at most/many places accompanied with accompanied with thunderstorm, lightning & gusty winds speed reaching 30-40 kmph likely over the region during next 7 days.

West India:

- ✓ **Heavy rainfall** likely at isolated places over Konkan & Goa during 13th-15th; Gujarat Region during 12th-17th; Ghat areas of Madhya Maharashtra on 11th, 13th & 14th and Saurashtra on 13th July.
- ✓ Light/moderate rainfall at many/some places very likely over the region during next 7 days.

Northeast India:

- ✓ Light/moderate rainfall at most places accompanied with **thunderstorm, lightning** likely to continue over Northeast India during next 7 days.
- ✓ Isolated **heavy rainfall** very likely over Assam & Meghalaya during 12th-17th; Mizoram & Tripura during 13th-15th; Arunachal Pradesh during 14th-17th July.

South Peninsular India:

- ✓ Isolated **heavy rainfall** likely over Coastal Karnataka, Kerala during 11th-17th and South Interior Karnataka & Tamil Nadu during 15th-17th July.
- ✓ **Strong surface winds** (speed reaching 40-50 kmph) very likely over South Peninsular India during next 3 days.
- ✓ Light/moderate rainfall at many/some places over Kerala & Mahe, Lakshadweep, Karnataka, Rayalaseema; isolated to scattered rainfall over Coastal Andhra Pradesh & Yanam, Telangana during next 7 days.

Hot & Humid weather Warnings:

Hot & Humid weather conditions very likely in isolated pockets of east Assam on 11th & 12th; Tamil Nadu, Coastal Andhra Pradesh & Yanam and Rayalaseema during 11th-13th July.

Fishermen Warnings:

Fishermen are advised to avoid venturing into the following from 11th July to 16th July 2025 to the following Areas:

Arabian Sea:

Along and off Konkan coast and adjoining sea area for day 3 & day 4 (13th & 14th July).

Along and off the Somalia coast and adjoining sea areas, Oman and adjoining Yemen coast & adjoining sea areas, most parts of westcentral and adjoining, some parts of eastcentral Arabian Sea, southern parts of north & northern parts of south Arabian Sea for day 1 to day 5 (11th to 16th July).

Bay of Bengal:

Along and off north Andhra Pradesh coast for day 1 & day 2 (11th & 12th July). Most parts of westcentral Bay of Bengal and adjoining areas of eastcentral and southwest Bay of Bengal for day 1 (11th July), any parts of westcentral Bay of Bengal and adjoining parts of southwest Bay of Bengal for day 2 (12th July), some parts of westcentral Bay of Bengal for day 3 (13th July) & few parts of westcentral Bay of Bengal for day 4 (14th July), few parts of eastcentral bay of Bengal, many parts of southwest Bay of Bengal for day 3 (13th July); some southern parts of south Bay of Bengal; Over Gulf of Mannar for day 1 to day 5 (11th & 15th July).

Total suspension of fishing operations is suggested over above mentioned areas and dates.

ii. Weather conditions and forecast over Delhi/NCR during 11th to 14th July, 2025 (Annexure IV)

For more details, kindly refer National Weather Bulletin:

https://mausam.imd.gov.in/responsive/all_india_forecast_bulletin.php

For District wise warnings refer: <https://mausam.imd.gov.in/responsive/districtWiseWarningGIS.php>

Rainfall recorded (in cm) during past 24 hours till 0830 hours IST of today, the 11th July:

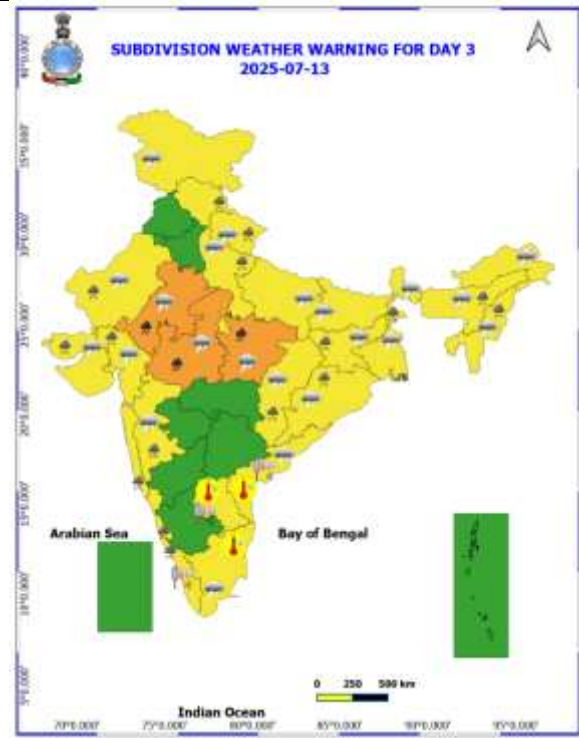
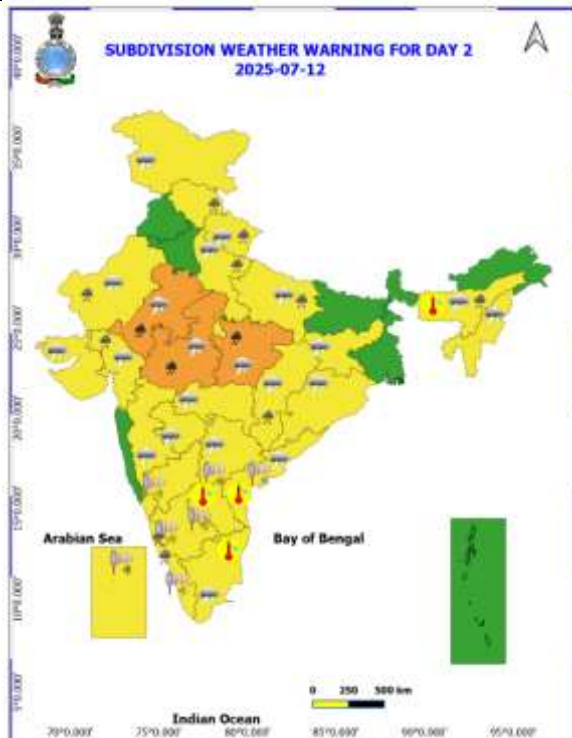
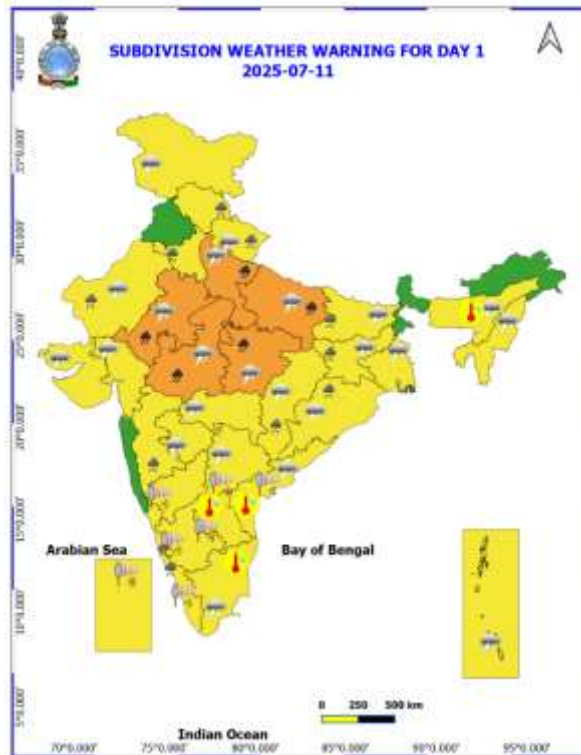
- ❖ **East Uttar Pradesh:** Attarra (dist Banda) 19; Chopan Fmo (dist Sonbhadra) 12; Chunar (dist Mirzapur) 9; Ghorawal (dist Sonbhadra), Manikpur (dist Chitrakoot) 7 Each;
- ❖ **Punjab:** Aliwal (dist Gurdaspur) 13;
- ❖ **East Madhya Pradesh:** Amarpatan (dist Satna) 12; Majhauri (dist Sidhi), Churhat (dist Sidhi) 10 Each; Rewa-aws (dist Rewa) 9; Sihawal (dist Sidhi), Chitrangi (dist Singrauli) 8 Each; Beohari (dist Shahdol), Rampur (dist Sidhi), Vijayraghgarh (dist Katni), Mada (dist Singrauli), Singodi (dist Katni) 7 Each;
- ❖ **Gangetic West Bengal:** Diamond Harbour (dist South 24 Parganas) 11;
- ❖ **Assam & Meghalaya:** Neamatighat (dist Jorhat) 11; Dharamtul (dist Morigaon), Nahar Katia (dist Dibrugarh) 7 Each;
- ❖ **Chhattisgarh:** Biharpur (dist Surajpur) 10; Doura Kochali (dist Balrampur), Sakri (dist Bilaspur) 9 Each; Wandrafnagar (dist Balrampur) 8;
- ❖ **East Rajasthan:** Chaksu (dist Jaipur) 10; Bari (dist Dholpur) 9; Baseri SR (dist Dholpur), Jhunjhunu (dist Jhunjhunu) 8 Each;
- ❖ **Haryana:** Kalanaur (dist Rohtak), Mahendragarh AWS (dist Mahendragarh) 9 Each; Mahendragarh (dist Mahendragarh) 8;
- ❖ **Kerala:** Bayar AWS (dist Kasargod) 9; Peringome AWS (dist Cannur) 8; Kudulu (dist Kasargod), Vellanikkara (dist Thrissur), Chemberi AWS (dist Cannur), Muliya AWS (dist Kasargod) 7 Each;
- ❖ **Jharkhand:** Hazaribagh Dvc (dist Hazaribagh) 9; Tenughat (dist Bokaro), Jamtara Fmo (dist Jamtara), Koner (dist Hazaribagh), Bau Kanke (dist Ranchi), Narayanpur (dist Jamtara) 7 Each;
- ❖ **West Uttar Pradesh:** Chandausi (dist Sambhal) 9; Khairagarh (dist Agra) 7;
- ❖ **Coastal Karnataka:** Bantwal (dist Dakshina Kannada) 8; Mudubidre (dist Dakshina Kannada), Shakti Nagar (dist Dakshina Kannada) 7 Each;
- ❖ **West Madhya Pradesh:** Bhandar (dist Datia) 7;
- ❖ **Bihar:** Adhwara (dist Bhabua) 7.

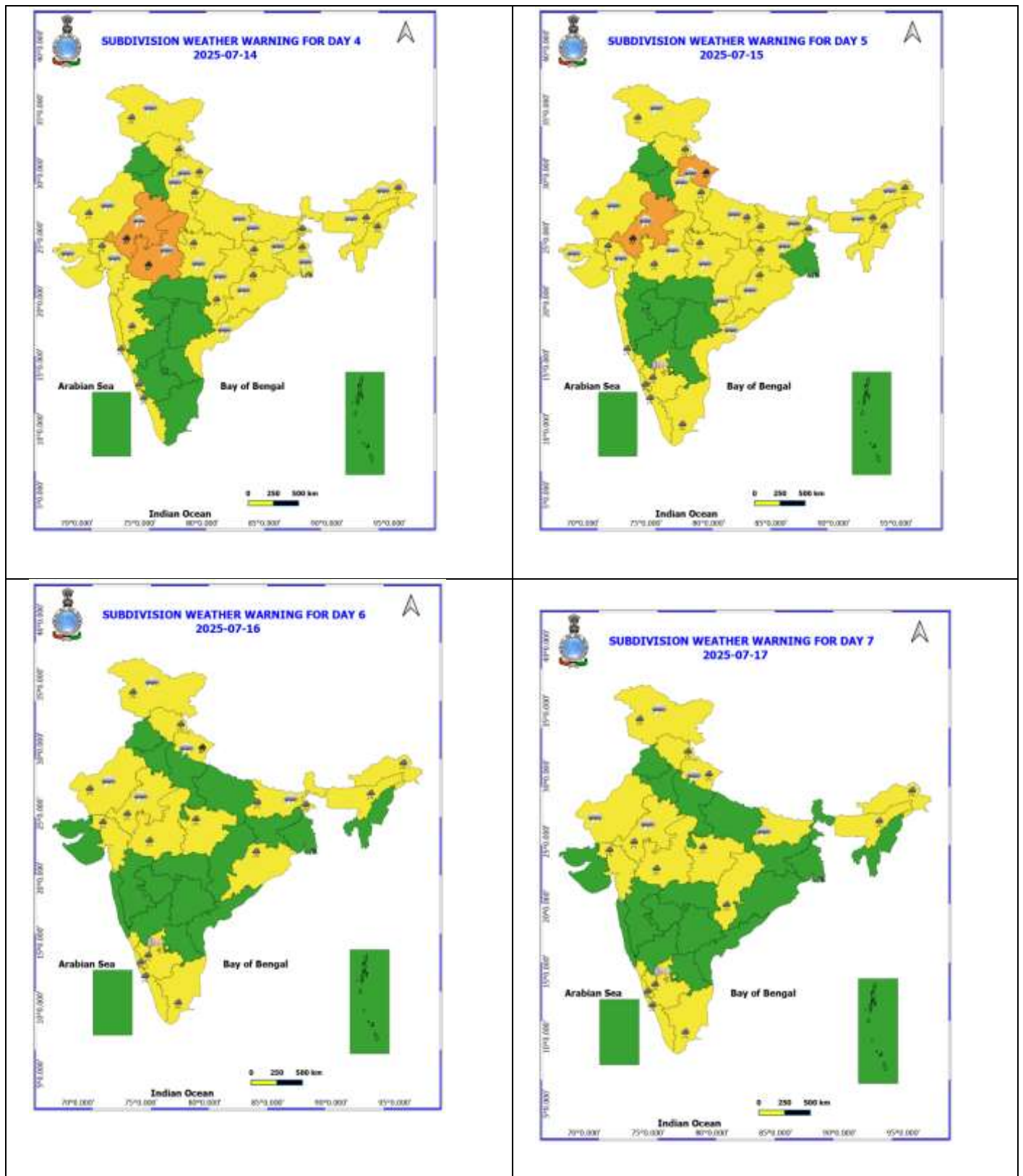
Realised Gusty Winds (kmph) During Past 24hours ending at 0830 hrs IST of today the 11th July:

- ❖ **Tamil Nadu:** Natham_ISRO 61, Vedaasandur 50, Tenkasi 46, Thiruchendur 44, Kovilpatti 43, Erode Isro 41, Kadavur Taluk Office 37, Tirur 37;
- ❖ **East Uttar Pradesh:** Fursatganj 48, Chandauli 41;
- ❖ **Chhattisgarh:** Balod 48;
- ❖ **Punjab:** Moga 46;
- ❖ **Madhya Maharashtra:** Nisam_Baramati (Pune) 43, Vilholi (Nashik) 39;
- ❖ **Himachal Pradesh:** Kukumseri 41;

Table-1								
7 Days Rainfall Forecast								
S.No.	Subdivision	11- Jul	12- Jul	13- Jul	14- Jul	15- Jul	16- Jul	17- Jul
		Day 1	Day 2	Day 3	Day 4	Day 5	Day 6	Day 7
1	ANDAMAN & NICOBAR ISLANDS	FWS	FWS	WS	WS	WS	WS	FWS
2	ARUNACHAL PRADESH	ISOL	SCT	SCT	FWS	FWS	FWS	FWS
3	ASSAM & MEHGHALAYA	SCT	FWS	FWS	FWS	FWS	FWS	FWS
4	NAGALAND, MANIPUR, MIZORAM AND TRIPURA	SCT	SCT	SCT	FWS	FWS	FWS	SCT
5	SUB HIMALAYAN WEST BENGAL & SIKKIM	SCT	FWS	WS	WS	WS	WS	FWS
6	GANGETIC WEST BENGAL	FWS	FWS	WS	WS	WS	FWS	FWS
7	ODISHA	FWS	FWS	WS	WS	FWS	SCT	SCT
8	JHARKHAND	WS	FWS	WS	WS	WS	SCT	SCT
9	BIHAR	SCT	ISOL	SCT	SCT	FWS	FWS	SCT
10	EAST UTTAR PRADESH	SCT	FWS	FWS	SCT	FWS	FWS	SCT
11	WEST UTTAR PRADESH	SCT	SCT	FWS	FWS	FWS	FWS	SCT
12	UTTARAKHAND	FWS	FWS	FWS	FWS	WS	WS	FWS
13	HARYANA, CHANDIGARH & DELHI	SCT	SCT	FWS	SCT	SCT	SCT	SCT
14	PUNJAB	ISOL	ISOL	SCT	SCT	SCT	SCT	SCT
15	HIMACHAL PRADESH	FWS	SCT	FWS	WS	WS	WS	WS
16	JAMMU AND KASHMIR AND LADAKH	SCT	SCT	SCT	SCT	FWS	FWS	SCT
17	WEST RAJASTHAN	SCT	SCT	SCT	FWS	FWS	FWS	FWS
18	EAST RAJASTHAN	FWS	FWS	FWS	FWS	FWS	FWS	FWS
19	WEST MADHYA PRADESH	FWS	WS	WS	WS	WS	FWS	FWS
20	EAST MADHYA PRADESH	WS	WS	WS	WS	WS	WS	WS
21	GUJRAT REGION	FWS	FWS	WS	WS	WS	FWS	FWS
22	SAURASHTRA & KUTCH	SCT	SCT	FWS	FWS	FWS	FWS	FWS
23	KONKAN & GOA	WS	WS	WS	WS	FWS	FWS	FWS
24	MADHYA MAHARASHTRA	SCT	SCT	SCT	SCT	ISOL	ISOL	ISOL
25	MARATHWADA	ISOL	ISOL	ISOL	ISOL	ISOL	ISOL	ISOL
26	VIDARBHA	FWS	FWS	FWS	SCT	SCT	SCT	SCT
27	CHHATTISGARH	WS	WS	WS	FWS	FWS	FWS	FWS
28	COASTAL ANDHRA PRADESH	ISOL	ISOL	ISOL	ISOL	ISOL	SCT	SCT
29	TELANGANA	SCT	SCT	SCT	SCT	SCT	SCT	FWS
30	RAYALASEEMA	ISOL	ISOL	ISOL	ISOL	ISOL	ISOL	SCT
31	TAMILNADU & PUDUCHERRY	ISOL	ISOL	ISOL	ISOL	ISOL	SCT	SCT
32	COSTAL KARNATAKA	WS	WS	WS	WS	WS	WS	WS
33	NORTH INTERIOR KARNATAKA	SCT	SCT	SCT	FWS	FWS	FWS	FWS
34	SOUTH INTERIOR KARNATAKA	FWS	FWS	FWS	FWS	FWS	FWS	FWS
35	KERALA AND MAHE	WS	WS	WS	WS	WS	WS	WS
36	LAKSHADWEEP	FWS	FWS	FWS	FWS	FWS	WS	WS

- As the lead period increases forecast accuracy decrease.





- Action may be taken based on ORANGE AND REDCOLOUR warnings.
- Vulnerable regions likely urban and hilly areas action may be initiated for heavy rainfall warning.
- As the lead period increases forecast accuracy decreases.

Detailed districtwise Multi Hazard weather warning for next five days available at <https://mausam.imd.gov.in/responsive/districtWiseWarningGIS.php>

Weather forecast over Delhi/NCR during 11th to 14th July 2025**Past Weather:**

There has been rise in the minimum temperature up to 1 to 2°C and fall in maximum temperature up to 3 to 6°C over Delhi/NCR during the past 24 hours. The maximum and minimum temperatures over Delhi were around 28 to 31°C and 24 to 26°C respectively. The minimum temperature was below normal up to 1 to 2 °C and the maximum temperature was below normal up to 3 to 5 °C. Partly cloudy sky conditions with predominant surface wind from the southeast direction with wind speeds up to 10 kmph prevailed during the past 24 hours. Light to moderate rainfall has been recorded in most places of Delhi. Generally cloudy sky conditions with a windspeed of less than 06 kmph from the west direction prevailed over the region in the forenoon today.

Weather Forecast:

11.07.2025: Generally cloudy sky. Light to moderate rain accompanied by thunderstorms/lightning. The maximum temperatures over Delhi are likely to be in the range of 31 to 33°C. The maximum temperature will be below normal up to 2 to 4 °C. The predominant surface wind will likely be from the northwest direction with a wind speed of less than 15 kmph in the afternoon. The wind speed will gradually decrease becoming 08-12 kmph from the northeast direction during evening and night.

12.07.2025: Partly cloudy sky. Very light to light rain accompanied by thunderstorms/lightning. The maximum and minimum temperatures over Delhi are likely to be in the range of 34 to 36°C and 24 to 26°C respectively. The minimum temperature will be below normal up to 1 to 3°C, and the maximum temperature will be near normal. The predominant surface wind will likely be from the northwest direction with a wind speed of less than 20 kmph during the morning hours. The wind speed will gradually decrease becoming less than 15 kmph from the northwest direction in the afternoon. It will decrease to less than 12 kmph from the northwest direction during the evening and night.

13.07.2025: Partly cloudy sky. Very light to light rain accompanied by thunderstorms/lightning. The maximum and minimum temperatures over Delhi are likely to be in the range of 35 to 37°C and 25 to 27°C, respectively. The minimum temperature will be below normal up to 1 to 2 °C, and the maximum temperature will be near normal. The predominant surface wind will likely be from the north direction with a wind speed of less than 15 kmph during the morning hours. The wind speed will gradually decrease becoming less than 10 kmph from the north direction in the afternoon. It will increase to less than 15 kmph from the southeast direction during the evening and night.

14.07.2025: Partly cloudy sky. Very light to light rain accompanied by thunderstorms/lightning. The maximum and minimum temperatures over Delhi are likely to be in the range of 32 to 34°C and 23 to 25°C, respectively. The minimum temperature will be near normal and the maximum temperature will be below normal up to 1 to 2 °C. The predominant surface wind will likely be from the southeast direction with a wind speed of less than 15 kmph during the morning hours. The wind speed will gradually increase, becoming less than 18 kmph from the southeast direction in the afternoon. It will decrease to less than 12 kmph from the east direction during the evening and night.

Impact expected and Action Suggested due to moderate rainfall with thunderstorm/lightning:

- Be cautious and take precautionary measures, though there is the likelihood of thunderstorms/lightning.
- Damage to standing crops, Minor to major damage to power and communication lines due to breaking of branches, Partial damage to vulnerable structures due to strong winds, Loose objects may fly.
- People are advised to keep a watch on the weather for worsening conditions and be ready to move to safer places accordingly, stay indoors, close windows & doors and avoid travel if possible, take safe shelters; do not take shelter under trees, do not lie on concrete floors and do not lean against concrete walls, unplug electrical/ electronic appliances, immediately get out of water bodies, keep away from all the objects that conduct electricity.

Impact & Action Suggested

- ✓ **Very heavy rainfall** over south Uttar Pradesh on 11th; East Rajasthan during 11th-15th; Uttarakhand on 15th & 16th July. Madhya Pradesh during 11th-14th July.

Impact Expected

- Localized Flooding of roads, water logging in low lying areas and closure of underpasses mainly in urban areas of the above region.
- Occasional reduction in visibility due to heavy rainfall.
- Disruption of traffic in major cities due to water logging in roads leading to increased travel time.
- Minor damage to kutch roads.
- Possibilities of damage to vulnerable structure.
- Localized Landslides/Mudslides/landslips/mudslips/landsinks/mudsinks.
- Damage to horticulture and standing crops in some areas due to inundation.
- It may lead to riverine flooding in some river catchments (for riverine flooding please visit Web page of CWC)

Action Suggested

- Check for traffic congestion on your route before leaving for your destination.
- Follow any traffic advisories that are issued in this regard.
- Avoid going to areas that face the water logging problems often.
- Avoid staying in vulnerable structure.

Agromet advisories for likely impact of Heavy / Heavy to Very Heavy / Extremely Heavy Rainfall

- In **Gird Zone of Madhya Pradesh**, postpone sowing of soybean and pearl millet and drain out excess water from already sown fields. In **Satpura Plateau zone**, make arrangements for proper drainage in the fields of maize, soybean and vegetables. Protect vegetable nurseries with green net or any other medium. In **Kymore Plateau and Satpura Hill Zone**, drain out excess water from vegetables.
- In **Chhattisgarh**, ensure proper drainage in rice nurseries and fields of rice, maize, pigeon pea, minor millets and vegetables.
- In **Mid Hills Sub Humid Zone of Himachal Pradesh**, provide support to the cucumber vines and maintain proper drainage in vegetable and maize fields. In **Sub Montane and Low Hills Sub Tropical Zone**, ensure proper drainage in maize fields to avoid water logging.
- In **Uttarakhand**, ensure proper drainage facilities in soybean, maize, barnyard millet, finger millet, pigeon pea, kidney beans, vegetables and orchards. Harvest matured vegetables and fruits and store in safe place.
- In **South Western Semi-Arid Zone of West Uttar Pradesh**, make proper arrangements to drain out excess water from the fields of paddy, spring sugarcane, pigeon pea, maize and vegetables.
- In **Southeastern Humid Plain Zone of East Rajasthan**, make provision to drain out excess water from rice nurseries and fields of maize, soybean and black gram. In **Flood Prone Eastern Plain Zone**, postpone sowing / re-sowing of sesame, green gram and pearl millet during heavy rains.
- In **Jharkhand**, make necessary arrangements to drain out excess water from maize fields, rice and vegetable nurseries. Cover the vegetable nurseries with polythene sheets.

Livestock / Fishery

- Keep the animals inside the shed during heavy rainfall and provide them balanced feed.
- Store feed and fodder in a safe place to prevent spoilage.
- Construct an outlet with proper netting around the ponds to drain out excess water, thereby preventing fish from escaping in case of overflow.

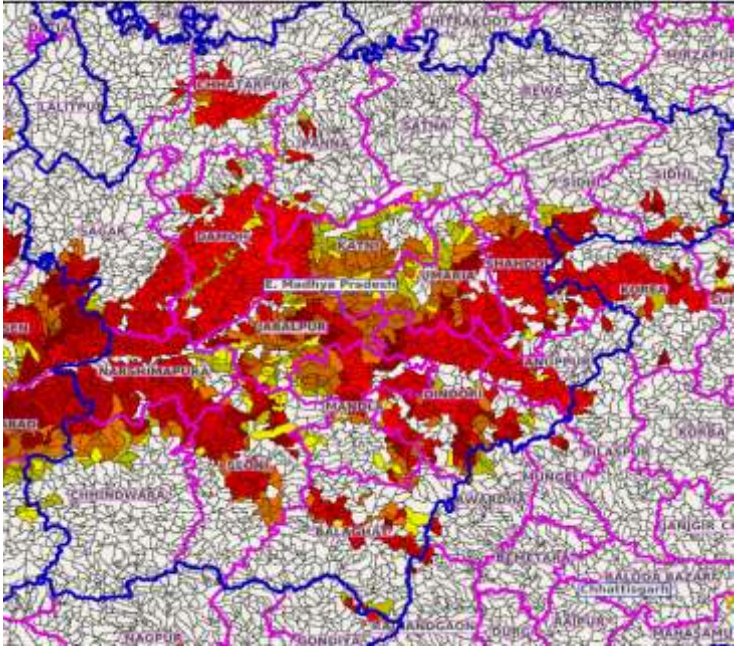
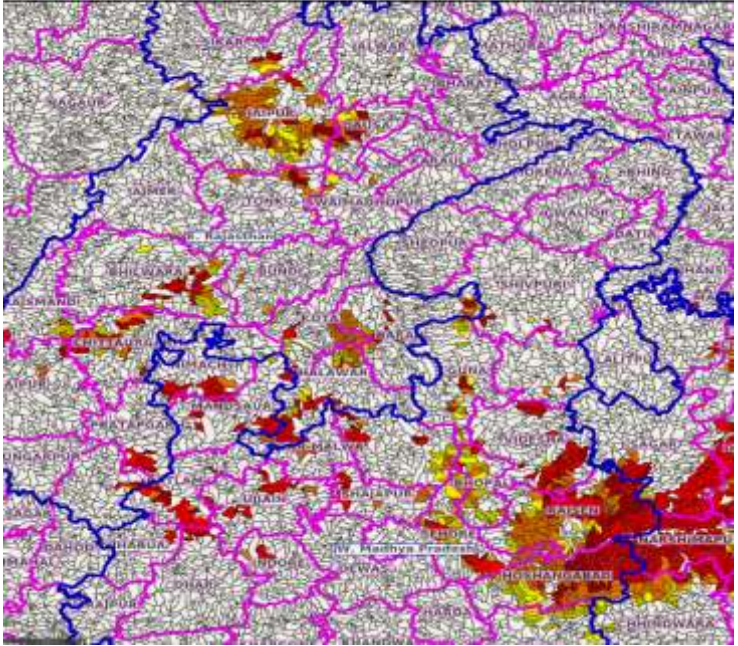
Livestock / Fishery

- Keep the animals inside the shed during heavy rainfall and provide them balanced feed.
- Store feed and fodder in a safe place to prevent spoilage.
- Construct an outlet with proper netting around the ponds to drain out excess water, thereby preventing fish from escaping in case of overflow.

Agromet advisories for likely impact of Thunderstorm / Gusty Winds / Squally Winds

- Provide mechanical support to horticultural crops and staking or support to vegetables and young fruit plants / fruit-bearing plants to avoid lodging due to strong winds.

Flash flood guidance:

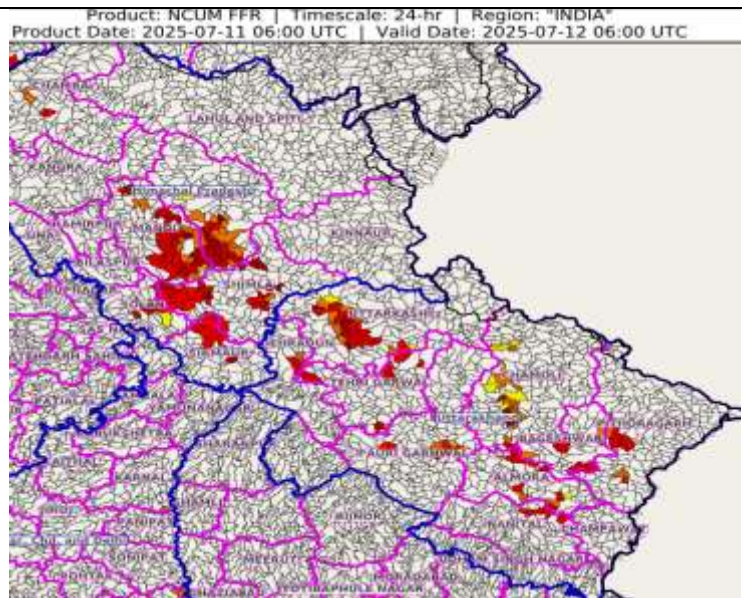
<p>24 hours Outlook for the Flash Flood Risk (FFR) till 1130 IST of 12-07-2025 :</p> <p>Low to Moderate flash flood risk likely over few watersheds & neighbourhoods of following Met Sub-divisions during next 24 hours.</p> <p>East Madhya Pradesh - Anuppur, Balaghat, Chhatarpur, Chhindwara, Damoh, Dindori, Jabalpur, Katni, Mandla, Narshimpura, Niwari, Panna, Sagar, Satna, Seoni, Shahdol, Sidhi, Singrauli, Tikamgarh and Umaria districts.</p> <p>Surface runoff/ Inundation may occur at some fully saturated soils & low-lying areas over Area of Concern (AoC) as shown in map due to expected rainfall occurrence in next 24 hours.</p>	<p>Product: NCUM FFR Timescale: 24-hr Region: "REGIONAL" Product Date: 2025-07-11 06:00 UTC Valid Date: 2025-07-12 06:00 UTC</p> 
<p>24 hours Outlook for the Flash Flood Risk (FFR) till 1130 IST of 12-07-2025 :</p> <p>Low to Moderate flash flood risk likely over few watersheds & neighbourhoods of following Met Sub-divisions during next 24 hours.</p> <p>East Rajasthan - Banswara, Bhilwara, Bundi, Chittaurgarh, Dausa, Jaipur, Pratapgarh, Rajsmand, Sikar, Swaimadhopur, Tonk and Udaipur districts.</p> <p>West Madhya Pradesh - Agar-Malwa, Ashoknagar, Betul, Bhopal, Guna, Indore, Jhabua, Mandsaur, Nimach, Raisen, Rajgarh, Ratlam, Sehore, Shajapur, Shivpuri, Ujjain, Videsha and Hoshangabad districts.</p> <p>Surface runoff/ Inundation may occur at some fully saturated soils & low-lying areas over Area of Concern (AoC) as shown in map due to expected rainfall occurrence in next 24 hours.</p>	<p>Product: NCUM FFR Timescale: 24-hr Region: "REGIONAL" Product Date: 2025-07-11 06:00 UTC Valid Date: 2025-07-12 06:00 UTC</p> 

24 hours Outlook for the Flash Flood Risk (FFR) till 1130 IST of 12-07-2025 :

Low to Moderate flash flood risk likely over few watersheds & neighbourhoods of following Met Sub-divisions during next 24 hours.

Himachal Pradesh - Chamba, Kullu, Mandi, Shimla, Sirmaur and Solan districts. Uttarakhand - Almora, Bageshwar, Chamoli, Dehradun, Nanital, Pauri Garhwal, Pithoragarh, Rudraprayag, Tehri Garwal and Uttarkashi districts.

Surface runoff/ Inundation may occur at some fully saturated soils & low-lying areas over Area of Concern (AoC) as shown in map due to expected rainfall occurrence in next 24 hours.



Legends & abbreviations:

- ❖ **Heavy Rain:**64.5-115.5mm; **Very Heavy Rain:**115.6-204.4mm; **Extremely Heavy Rain:** >204.4mm.
- ❖ **Obsy:** Observatory; Automatic Weather Station; **ARG:** Automatic Rain Gauge; **dist:** District; **NH:** National Highway; **KVK:** Krishi Vigyan Kendra; **DVC:** Damodar Valley Corporation; **PTO:** Part Time Office, **Aero:** Aerodrome, **IAF:** Indian Air Force.
- ❖ **Region wise classification of meteorological Sub-Divisions:**
 - **Northwest India:** Western Himalayan Region (Jammu-Kashmir-Ladakh-Gilgit-Baltistan-Muzaffarabad, Himachal Pradesh and Uttarakhand); Punjab, Haryana-Chandigarh-Delhi; West Uttar Pradesh, East Uttar Pradesh, West Rajasthan and East Rajasthan.
 - **Central India:** West Madhya Pradesh, East Madhya Pradesh, Vidarbha and Chhattisgarh.
 - **East India:** Bihar, Jharkhand, Sub-Himalayan West Bengal & Sikkim; Gangetic West Bengal, Odisha and Andaman & Nicobar Islands.
 - **Northeast India:** Arunachal Pradesh, Assam & Meghalaya and Nagaland, Manipur, Mizoram & Tripura.
 - **West India:** Gujarat Region, Saurashtra & Kutch, Konkan & Goa, Madhya Maharashtra and Marathawada.
 - **South India:** Coastal Andhra Pradesh & Yanam, Telangana, Rayalaseema, Coastal Karnataka, North Interior Karnataka, South Interior Karnataka, Kerala & Mahe, Tamil Nadu, Puducherry & Karaikal and Lakshadweep.

LEGENDS

1. अंडमान और निकोबार द्वीपसमूह

2. अरुणाचल प्रदेश

3. असम और मेघालय

4. नागालैंड, मणिपुर, मिजोरम और त्रिपुरा

5. उप-हिमालयी पश्चिम बंगाल और सिक्किम

6. गंगीय पश्चिम बंगाल

7. ओडिशा

8. झारखंड

9. बिहार

10. पूर्वी उत्तर प्रदेश

11. पश्चिम उत्तर प्रदेश

12. उत्तराखंड

13. हरियाणा, चंडीगढ़ और दिल्ली

14. पंजाब

15. हिमाचल प्रदेश

16. जम्मू और कश्मीर और लद्दाख

17. पश्चिम राजस्थान

18. पूर्वी राजस्थान

19. पश्चिम मध्य प्रदेश

20. पूर्वी मध्य प्रदेश

21. गुजरात

22. सौराष्ट्र

23. कोंकण और गोवा

24. मध्य महाराष्ट्र

25. मराठवाड़ा

26. विदर्भ

27. छत्तीसगढ़

28. तटीय आंध्र प्रदेश और यनम

29. तेलंगाना

30. रायलसीमा

31. तमिलनाडु, पुडुचेरी और कराईकल

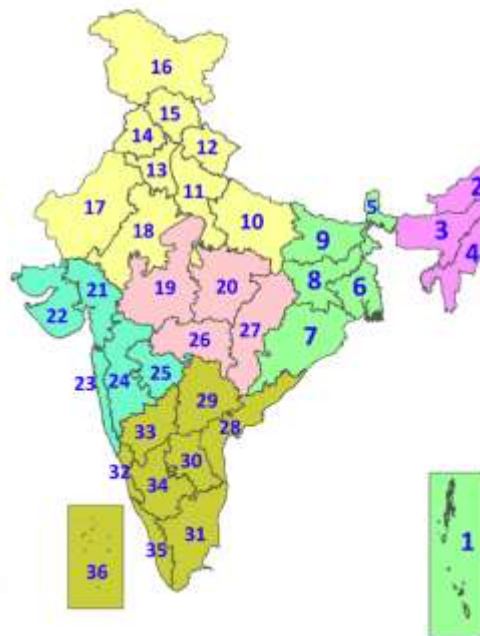
32. तटीय कर्नाटक

33. आंतरिक उत्तरी कर्नाटक

34. आंतरिक दक्षिणी कर्नाटक

35. केरल और माहे

36. लक्षद्वीप



1. Andaman & Nicobar Islands

2. Arunachal Pradesh

3. Assam & Meghalaya

4. Nagaland, Manipur, Mizoram & Tripura

5. Sub-Himalayan West Bengal & Sikkim

6. Gangetic West Bengal

7. Odisha

8. Jharkhand

9. Bihar

10. East Uttar Pradesh

11. West Uttar Pradesh

12. Uttarakhand

13. Haryana, Chandigarh & Delhi

14. Punjab

15. Himachal Pradesh

16. Jammu & Kashmir and Ladakh

17. West Rajasthan

18. East Rajasthan

19. West Madhya Pradesh

20. East Madhya Pradesh

21. Gujarat

22. Saurashtra

23. Konkan & Goa

24. Madhya Maharashtra

25. Marathwada

26. Vidarbha

27. Chhattisgarh

28. Coastal Andhra Pradesh & Yanam

29. Telangana

30. Rayalaseema

31. Tamilnadu, Puducherry & Karaikal

32. Coastal Karnataka

33. North Interior Karnataka

34. South Interior Karnataka

35. Kerala & Mahe

36. Lakshadweep

SPATIAL DISTRIBUTION (% of Stations reporting)

% Stations	Category	% Stations	Category
76-100	Widespread (WS/Most Places)	26-50	Scattered (SCT/A Few Places)
51-75	Fairly Widespread (FWS/Many Places)	1-25	Isolated (ISOL)



Fog



Heavy Snow



Cold Wave



Heavy Rain



Dust Storm



Cold Day



Very Heavy Rain



Heat Wave



Ground Frost



Extremely Heavy Rain



Warm Night



Thunder & Lightning



Hot Day



Hailstorm



Hot & Humid



Dust Raising Winds



Strong Surface Winds

COLOUR CODED WARNING

No Warning (No Action)

Watch (Be Aware)

Alert (Be Prepared To Take Action)

Warning (Take Action)

Probabilistic Forecast

Terms	Probability of Occurrence (%)
Unlikely	< 25
Likely	25 - 50
Very Likely	50 - 75
Most Likely	> 75

* Red colour warning does not mean "Red Alert", Red colour warning means "Take Action".

Forecast and Warning for any day is valid from 0830 hours IST of day till 0830 hours IST of next day.

For more details, kindly visit <https://mausam.imd.gov.in> or contact: 011-2434-4599

(Service to the Nation since 1875)

DEFINITION/CRITERIA

Rain/ Snow *

Heavy: 64.5 to 115.5 mm/cm *
Very Heavy: 115.6 to 204.4 mm/cm *
Extremely Heavy: > 204.4 mm/cm *

Heat Wave

When maximum temperature of a station reaches $\geq 40^{\circ}\text{C}$ for plains and $\geq 30^{\circ}\text{C}$ for hilly regions
(a) Based on Departure from normal

Heat Wave: Maximum Temperature Departure from normal 4.5°C to 6.4°C .

Severe Heat Wave: Maximum Temperature Departure from normal $\geq 6.5^{\circ}\text{C}$

(b). Based on Actual maximum temperature

Heat Wave: When actual maximum temperature $\geq 45^{\circ}\text{C}$.

Severe Heat Wave: When actual maximum temperature $\geq 47^{\circ}\text{C}$.

(c). Criteria for heat wave for coastal stations

When maximum temperature departure is $> 4.5^{\circ}\text{C}$ from normal. Heat Wave may be described provided maximum temperature $\geq 37^{\circ}\text{C}$.

Warm Night

When maximum temperature remains 40°C

Warm Night: When minimum temperature departure 4.5°C to 6.4°C .

Severe Warm Night: When minimum temperature departure $> 6.4^{\circ}\text{C}$.

Cold Wave

When minimum temperature of a station $\leq 10^{\circ}\text{C}$ for plains and $\leq 0^{\circ}\text{C}$ for hilly regions.

(a). Based on departure

Cold Wave: Minimum Temperature Departure from normal -4.5°C to -6.4°C .

Severe Cold Wave: Minimum Temperature Departure from normal $\leq -6.5^{\circ}\text{C}$

(b) Based on actual Minimum Temperature (for Plains only)

Cold Wave: When Minimum Temperature is $\leq 4.0^{\circ}\text{C}$

Severe Cold Wave: When Minimum Temperature is $\leq 2.0^{\circ}\text{C}$

(c) For Coastal Stations

When Minimum Temperature departure is $\leq -4.5^{\circ}\text{C}$ & actual Minimum Temperature is $\leq 15^{\circ}\text{C}$

Cold Day

When minimum temperature of a station $\leq 10^{\circ}\text{C}$ for plains and $\leq 0^{\circ}\text{C}$ for hilly regions

Based on departure

Cold Day: Maximum Temperature Departure from normal -4.5°C to -6.4°C .

Severe Cold Day: Maximum Temperature Departure from normal $\leq -6.5^{\circ}\text{C}$

Fog

Phenomenon of small droplets suspended in air and the horizontal visibility $< 1\text{km}$

Moderate Fog: When the visibility between 500-200 metres

Dense Fog: when the visibility between 50- 200 metres

Very Dense Fog: when the visibility < 50 metres

Thunderstorm

Sudden electrical discharges manifested by a flash of light (Lightning) and a sharp rumbling sound (thunder)

Dust/Sand Storm

An ensemble of particles of dust or sand energetically lifted to great heights by a strong and turbulent wind.

Frost

Ice deposits on ground

Air temperature $\leq 4^{\circ}\text{C}$ (over Plains)

Squall

A strong wind that rises suddenly, lasts for atleast 1 minute.

Moderate: Wind speed 52-61 kmph

Severe: Wind speed 62-67 kmph

Very Severe: Wind speed > 67 kmph

Sea State

Effect of various waves in the sea over specific area

Rough to very rough: Wind speed 41-62 kmph (22-33 knots) & Wave height 2.5-6 metre

High to very high: Wind speed 63-117 kmph (34-63 knots) & Wave height 6-14 metre

Phenomenal: Wind speed > 117 kmph (> 63 knots) & Wave height > 14 metre

Cyclone

Cyclonic Storm: Wind speed 62-87 kmph (34-47 knots)

Severe Cyclonic Storm: Wind speed 88-117 kmph (48-63 knots)

Very Severe Cyclonic Storm: Wind speed 118-165 kmph (64 - 89 knots)

Extremely Severe Cyclonic Storm: Wind speed 166-220 kmph (90 -119 knots)

Super Cyclone Storm: Wind speed > 220 kmph (> 119 knots)

* Red colour warning does not mean "Red Alert", Red colour warning means "Take Action".

Forecast and Warning for any day is valid from 0830 hours IST of day till 0830 hours IST of next day.

For more details, kindly visit <https://mausam.imd.gov.in> or contact: 011-2434-4599

(Service to the Nation since 1875)

Hot and Humid: When maximum temperatures remain 3°C above normal along with the above normal relative humidity.